

PANEN PRIME

| PREMIUM • INSTITUTIONAL MARKET ANALYSIS

Kamis, 28 Mei 2026

THEME EDITION: BLACK LIGHT • PAGI

Analisis SMC & AI Confluence komprehensif untuk navigasi market yang presisi secara profesional.

GLOBAL MARKET SENTIMENT

USD BIAS: NEUTRAL

USD DRIVER: USD bergerak netral karena market menunggu katalis utama berikutnya.

INSTITUTIONAL BREAKING NEWS

Bagaimana kita berpikir tentang perang Iran – dan apa pengaruhnya terhadap minyak dan stok

[USD] Source: Freerepublic.com • Bias: NEUTRAL

Pendapat Mahkamah Agung yang baru adalah berita buruk bagi pekerja federal

[USD] Source: Vox • Bias: NEUTRAL

Bank-bank komersial AS mengalami lonjakan pinjaman sebesar \$211 miliar dari tahun ke tahun di tengah kekhawatiran inflasi

[USD] Source: Crypto Briefing • Bias: BULLISH

Bank of Korea Terlihat Mendukung Hawkish Hold seiring Meningkatnya Risiko Inflasi

[USD] Source: Financial Post • Bias: BULLISH

Inflasi dan Kebingungan Meningkat, Konsumen Menurun

[USD] Source: WWD • Bias: NEUTRAL

ARIMA tentang Harga Bahan Makanan

[USD] Source: Econbrowser.com • Bias: NEUTRAL

Kepercayaan Konsumen Turun seiring Meningkatnya Harga Gas dan Kekhawatiran Inflasi

[USD] Source: pymnts.com • Bias: NEUTRAL

Kevin Warsh sekarang memimpin The Fed. Tantangan utamanya adalah doozy.

[USD] Source: CBS News • Bias: BEARISH

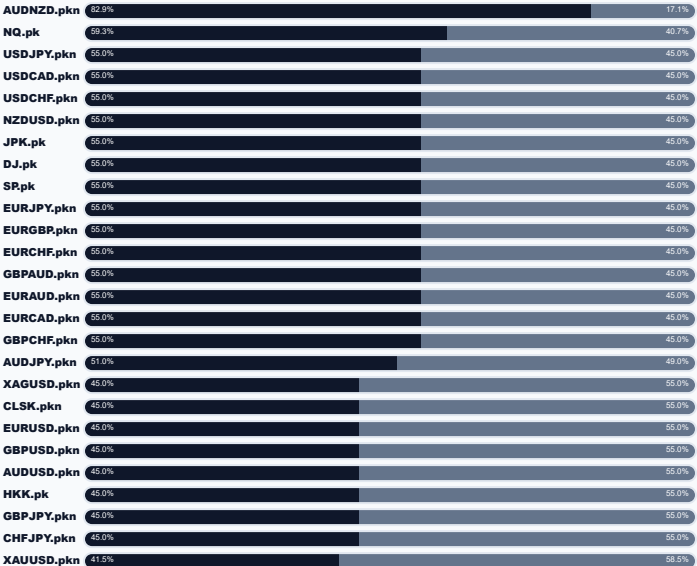
Obligasi tidak akan membantu saat ini: Mengapa RBI harus menaikkan suku bunga, dibandingkan menggunakan skema mobilisasi valas seperti di masa lalu

[USD] Source: The Times of India • Bias: NEUTRAL

Beberapa tempat BBQ paling terkenal di Texas terpaksa tutup karena harga daging sapi yang melambung tinggi

[USD] Source: New York Post • Bias: NEUTRAL

INSTITUTIONAL LIQUIDITY PULSE (ALL PAIRS)



INSTITUTIONAL ECONOMIC CALENDAR

| WAKTU | CUR | KEGIATAN | DAMPAK | AKTUAL | KONSENSUS | SBLMNYA |
|----------------------|------------|----------------------------------|--------|--------|-----------|---------|
| JUMAT, 29 MEI | | | | | | |
| 06:30 | JPY | IHK Inti Tokyo tahun/tahun | ■■ | - | 1.5% | 1.5% |
| 13:29 | EUR | IHK Pendahuluan Jerman m/m | ■■ | - | 0.1% | 0.6% |
| 15:20 | GBP | Pidato Gubernur BOE Bailey | ■■■ | - | - | - |
| KAMIS, 28 MEI | | | | | | |
| 14:10 | EUR | Presiden ECB Lagarde Berbicara | ■■ | - | - | - |
| 18:00 | CHF | Ketua SNB Schlegel Berbicara | ■■ | - | - | - |
| 19:30 | USD | Indeks Harga PCE Inti m/m | ■■■ | - | 0.3% | 0.3% |
| 19:30 | USD | PDB Awal q/q | ■■■ | - | 2.0% | 0.7% |
| 19:30 | USD | Indeks Harga PDB Pendahuluan q/q | ■■ | - | 3.6% | 3.8% |
| 19:30 | USD | Klaim Pengangguran | ■■ | - | 211K | 209K |
| 21:00 | USD | Penjualan Rumah Baru | ■■ | - | 661K | 682K |
| RABU, 27 MEI | | | | | | |
| 07:00 | JPY | Pidato Gubernur BOJ Ueda | ■■ | - | - | - |
| 08:30 | AUD | IHK bulan/bulan | ■■■ | - | 0.6% | 1.1% |
| 08:30 | AUD | IHK tahun/tahun | ■■■ | - | 4.4% | 4.6% |
| 08:30 | AUD | Rata-rata CPI yang Dipangkas m/m | ■■■ | - | 0.3% | 0.3% |
| 15:00 | EUR | Tinjauan Stabilitas Keuangan ECB | ■■ | - | - | - |

*Data disinkronisasi secara real-time dari institutional feeds (ForexFactory/Investing). Dampak Merah (High) wajib diwaspadai.

XAUUSD.pkn

SELL 63%

STRATEGY TARGET

| | | | |
|---------------|----------------|----------|--------------------------|
| ENTRY | 4488.60 | PIVOT | 4506.63 |
| TP (ATR ×3) | 4414.82 | OB ZONE | 4518.65 - 4529.50 |
| SL (ATR ×1.5) | 4512.47 | FVG ZONE | 4501.62 - 4514.64 |

INSTITUTIONAL SNR (TYPICAL D1 PIVOT)

| | | | |
|------------|----------------|------------|----------------|
| R3 Typical | 4596.87 | S1 Typical | 4469.67 |
| R2 Typical | 4570.23 | S2 Typical | 4443.03 |
| R1 Typical | 4533.27 | S3 Typical | 4406.07 |
| PIVOT (PP) | | | 4506.63 |

D1 OHLC (PREV SESSION)

| | | | |
|-------|----------------|------|----------------|
| Open | 4542.70 | High | 4543.60 |
| Close | 4496.30 | Low | 4480.00 |

● **OPSI SELL:** Jika tembus Sell Stop di **4479.92**. SL: **4512.47** | TP: **4414.82**.

● **OPSI BUY** (Berlawanan Arah): Stop **4497.28** | SL: **4464.73** | TP: **4562.38**.

AI PREDICTION: **BEARISH (63%)**

LEMAH • ASIAN SESSION

📊 Indikator Real: RSI(**41.5**) • MACD: **+1.81810** • Pattern: **DOJI** • PDH/PDL: **↓ Breakdown**

📈 SMC Insight: Fase **Consolidation** | Struktur **BOS (Break of Structure)**. Liq: **41.5% BUY / 58.5% SELL**. Sweep: — • FVG: —.



XAGUSD.pkn

SELL 52%

STRATEGY TARGET

| | | | |
|---------------|---------------|----------|------------------------|
| ENTRY | 74.995 | PIVOT | 76.863 |
| TP (ATR ×3) | 72.744 | OB ZONE | 77.569 - 77.900 |
| SL (ATR ×1.5) | 75.723 | FVG ZONE | 75.392 - 75.790 |

INSTITUTIONAL SNR (TYPICAL D1 PIVOT)

| | | | |
|------------|---------------|------------|---------------|
| R3 Typical | 80.107 | S1 Typical | 75.827 |
| R2 Typical | 79.003 | S2 Typical | 74.723 |
| R1 Typical | 77.967 | S3 Typical | 73.687 |
| PIVOT (PP) | | | 76.863 |

D1 OHLC (PREV SESSION)

| | | | |
|-------|---------------|------|---------------|
| Open | 77.195 | High | 77.900 |
| Close | 76.930 | Low | 75.760 |

● **OPSI SELL:** Jika tembus Sell Stop di **74.730**. **SL: 75.723** | **TP: 72.744**.

● **OPSI BUY** (Berlawanan Arah): Stop 75.260 | SL: 74.267 | TP: 77.246.

AI PREDICTION: NEUTRAL (52%)

LEMAH • ASIAN SESSION

📊 Indikator Real: RSI(**46.9**) • MACD: **+0.02315** • Pattern: **NONE** • PDH/PDL: | **Breakdown**

📈 SMC Insight: Fase **Markdown** | Struktur **Equilibrium**. Liq: **45.0% BUY / 55.0% SELL**. Sweep: — • FVG: —.



CLSK.pkn

SELL 61%

STRATEGY TARGET

| | | | |
|---------------|--------------|----------|----------------------|
| ENTRY | 89.48 | PIVOT | 92.74 |
| TP (ATR ×3) | 85.67 | OB ZONE | 94.14 - 94.70 |
| SL (ATR ×1.5) | 90.71 | FVG ZONE | 90.15 - 90.82 |

INSTITUTIONAL SNR (TYPICAL D1 PIVOT)

| | | | |
|------------|--------------|------------|--------------|
| R3 Typical | 97.39 | S1 Typical | 90.79 |
| R2 Typical | 96.04 | S2 Typical | 89.44 |
| R1 Typical | 94.09 | S3 Typical | 87.49 |
| PIVOT (PP) | | | 92.74 |

D1 OHLC (PREV SESSION)

| | | | |
|-------|--------------|------|--------------|
| Open | 91.66 | High | 94.70 |
| Close | 92.13 | Low | 91.40 |

● **OPSI SELL: Jika tembus Sell Stop di 89.03. SL: 90.71 | TP: 85.67.**

● OPSI BUY (Berlawanan Arah): Stop 89.93 | SL: 88.25 | TP: 93.29.

AI PREDICTION: **BEARISH (61%)**

LEMAH • ASIAN SESSION

📊 Indikator Real: RSI(**39.8**) • MACD: **+0.05537** • Pattern: **BULLISH_ENGULF** • PDH/PDL: ↓

Breakdown

📈 SMC Insight: Fase **Markdown** | Struktur **Equilibrium**. Liq: **45.0% BUY / 55.0% SELL**. Sweep: — • FVG: —.



EURUSD.pkn

SELL 64%

STRATEGY TARGET

| | | | |
|---------------|----------------|----------|--------------------------|
| ENTRY | 1.16320 | PIVOT | 1.16356 |
| TP (ATR ×3) | 1.15908 | OB ZONE | 1.16585 - 1.16645 |
| SL (ATR ×1.5) | 1.16453 | FVG ZONE | 1.16392 - 1.16465 |

INSTITUTIONAL SNR (TYPICAL D1 PIVOT)

| | | | |
|------------|----------------|------------|----------------|
| R3 Typical | 1.16771 | S1 Typical | 1.16229 |
| R2 Typical | 1.16627 | S2 Typical | 1.16085 |
| R1 Typical | 1.16500 | S3 Typical | 1.15959 |
| PIVOT (PP) | | | 1.16356 |

D1 OHLC (PREV SESSION)

| | | | |
|-------|----------------|------|----------------|
| Open | 1.16442 | High | 1.16482 |
| Close | 1.16374 | Low | 1.16212 |

● **OPSI SELL:** Jika tembus Sell Stop di **1.16271**. SL: **1.16453** | TP: **1.15908**.

● **OPSI BUY** (Berlawanan Arah): Stop 1.16368 | SL: 1.16187 | TP: 1.16731.

AI PREDICTION: **BEARISH (64%)**

LEMAH • ASIAN SESSION

📊 Indikator Real: RSI(**32.3**) • MACD: **-0.00013** • Pattern: **NONE** • PDH/PDL: ↓ **Breakdown**

📈 SMC Insight: Fase Markdown | Struktur BOS (Break of Structure). Liq: **45.0% BUY / 55.0% SELL**.
Sweep: — • FVG: —.



GBPUSD.pkn

SELL 61%

STRATEGY TARGET

| | | | |
|---------------|----------------|----------|--------------------------|
| ENTRY | 1.34309 | PIVOT | 1.34640 |
| TP (ATR ×3) | 1.33853 | OB ZONE | 1.34526 - 1.34593 |
| SL (ATR ×1.5) | 1.34457 | FVG ZONE | 1.34390 - 1.34470 |

INSTITUTIONAL SNR (TYPICAL D1 PIVOT)

| | | | |
|------------|----------------|------------|----------------|
| R3 Typical | 1.35625 | S1 Typical | 1.34224 |
| R2 Typical | 1.35341 | S2 Typical | 1.33940 |
| R1 Typical | 1.34924 | S3 Typical | 1.33524 |
| PIVOT (PP) | | | 1.34640 |

D1 OHLC (PREV SESSION)

| | | | |
|-------|----------------|------|----------------|
| Open | 1.35044 | High | 1.35057 |
| Close | 1.34508 | Low | 1.34356 |

● **OPSI SELL:** Jika tembus Sell Stop di **1.34256**. SL: **1.34457** | TP: **1.33853**.

● **OPSI BUY** (Berlawanan Arah): Stop **1.34363** | SL: **1.34162** | TP: **1.34766**.

AI PREDICTION: **BEARISH (61%)**

LEMAH • ASIAN SESSION

📊 Indikator Real: RSI(**39.1**) • MACD: **+0.00003** • Pattern: **NONE** • PDH/PDL: | **Breakdown**

📈 SMC Insight: Fase **Consolidation** | Struktur **CHoCH (Change of Character)**. Liq: **45.0% BUY / 55.0% SELL**. Sweep: ✓ **Aktif** • FVG: —.



USDJPY.pkn

BUY 60%

STRATEGY TARGET

| | | | |
|---------------|----------------|----------|--------------------------|
| ENTRY | 159.480 | PIVOT | 159.183 |
| TP (ATR ×3) | 160.022 | OB ZONE | 159.167 - 159.247 |
| SL (ATR ×1.5) | 159.305 | FVG ZONE | 159.289 - 159.384 |

INSTITUTIONAL SNR (TYPICAL D1 PIVOT)

| | | | |
|------------|----------------|------------|----------------|
| R3 Typical | 159.947 | S1 Typical | 158.985 |
| R2 Typical | 159.664 | S2 Typical | 158.702 |
| R1 Typical | 159.466 | S3 Typical | 158.504 |
| PIVOT (PP) | | | 159.183 |

D1 OHLC (PREV SESSION)

| | | | |
|-------|----------------|------|----------------|
| Open | 158.915 | High | 159.382 |
| Close | 159.267 | Low | 158.901 |

● OPSI BUY: Jika tembus Buy Stop di 159.544. SL: 159.305 | TP: 160.022.

● OPSI SELL (Berlawanan Arah): Stop 159.416 | SL: 159.655 | TP: 158.938.

AI PREDICTION: BULLISH (60%)

LEMAH • ASIAN SESSION

📊 Indikator Real: RSI(57.8) • MACD: -0.00458 • Pattern: NONE • PDH/PDL: ↑ Breakout

📈 SMC Insight: Fase Markup | Struktur CHoCH (Change of Character). Liq: 55.0% BUY / 45.0% SELL. Sweep: — • FVG: —.



AUDUSD.pkn

SELL 58%

STRATEGY TARGET

| | | | |
|---------------|----------------|----------|--------------------------|
| ENTRY | 0.71454 | PIVOT | 0.71692 |
| TP (ATR ×3) | 0.71181 | OB ZONE | 0.71778 - 0.71818 |
| SL (ATR ×1.5) | 0.71543 | FVG ZONE | 0.71502 - 0.71551 |

INSTITUTIONAL SNR (TYPICAL D1 PIVOT)

| | | | |
|------------|----------------|------------|----------------|
| R3 Typical | 0.71981 | S1 Typical | 0.71601 |
| R2 Typical | 0.71882 | S2 Typical | 0.71501 |
| R1 Typical | 0.71791 | S3 Typical | 0.71411 |
| PIVOT (PP) | | | 0.71692 |

D1 OHLC (PREV SESSION)

| | | | |
|-------|----------------|------|----------------|
| Open | 0.71767 | High | 0.71782 |
| Close | 0.71700 | Low | 0.71592 |

● **OPSI SELL:** Jika tembus Sell Stop di **0.71422**. SL: **0.71543** | TP: **0.71181**.

● **OPSI BUY** (Berlawanan Arah): Stop 0.71486 | SL: 0.71366 | TP: 0.71728.

AI PREDICTION: **BEARISH (58%)**

LEMAH • ASIAN SESSION

📊 Indikator Real: RSI(51.4) • MACD: **+0.00014** • Pattern: **NONE** • PDH/PDL: | **Breakdown**

📈 SMC Insight: Fase **Markdown** | Struktur **CHoCH (Change of Character)**. Liq: **45.0% BUY / 55.0% SELL**. Sweep: — • FVG: —.



USDCAD.pkn

BUY 61%

STRATEGY TARGET

| | | | |
|---------------|----------------|----------|--------------------------|
| ENTRY | 1.38320 | PIVOT | 1.38071 |
| TP (ATR ×3) | 1.38864 | OB ZONE | 1.37990 - 1.38070 |
| SL (ATR ×1.5) | 1.38144 | FVG ZONE | 1.38128 - 1.38224 |

INSTITUTIONAL SNR (TYPICAL D1 PIVOT)

| | | | |
|------------|----------------|------------|----------------|
| R3 Typical | 1.38475 | S1 Typical | 1.37929 |
| R2 Typical | 1.38344 | S2 Typical | 1.37798 |
| R1 Typical | 1.38202 | S3 Typical | 1.37656 |
| PIVOT (PP) | | | 1.38071 |

D1 OHLC (PREV SESSION)

| | | | |
|-------|----------------|------|----------------|
| Open | 1.37990 | High | 1.38213 |
| Close | 1.38060 | Low | 1.37940 |

● OPSI BUY: Jika tembus Buy Stop di **1.38384**. SL: **1.38144** | TP: **1.38864**.

● OPSI SELL (Berlawanan Arah): Stop **1.38256** | SL: **1.38496** | TP: **1.37776**.

AI PREDICTION: BULLISH (61%)

LEMAH • ASIAN SESSION

📊 Indikator Real: RSI(**51.7**) • MACD: **-0.00001** • Pattern: **NONE** • PDH/PDL: ↑ **Breakout**

📈 SMC Insight: Fase **Consolidation** | Struktur **CHoCH (Change of Character)**. Liq: **55.0% BUY / 45.0% SELL**. Sweep: — • FVG: —.



USDCHF.pkn

BUY 60%

STRATEGY TARGET

| | | | |
|---------------|----------------|----------|--------------------------|
| ENTRY | 0.78682 | PIVOT | 0.78483 |
| TP (ATR ×3) | 0.79037 | OB ZONE | 0.78423 - 0.78475 |
| SL (ATR ×1.5) | 0.78567 | FVG ZONE | 0.78557 - 0.78619 |

INSTITUTIONAL SNR (TYPICAL D1 PIVOT)

| | | | |
|------------|----------------|------------|----------------|
| R3 Typical | 0.79081 | S1 Typical | 0.78321 |
| R2 Typical | 0.78863 | S2 Typical | 0.78103 |
| R1 Typical | 0.78701 | S3 Typical | 0.77941 |
| PIVOT (PP) | | | 0.78483 |

D1 OHLC (PREV SESSION)

| | | | |
|-------|----------------|------|----------------|
| Open | 0.78274 | High | 0.78644 |
| Close | 0.78540 | Low | 0.78264 |

● OPSI BUY: Jika tembus Buy Stop di **0.78724**. SL: **0.78567** | TP: **0.79037**.

● OPSI SELL (Berlawanan Arah): Stop **0.78640** | SL: **0.78797** | TP: **0.78327**.

AI PREDICTION: BULLISH (60%)

LEMAH • ASIAN SESSION

📊 Indikator Real: RSI(**54.9**) • MACD: **-0.00001** • Pattern: **NONE** • PDH/PDL: ↑ **Breakout**

📈 SMC Insight: Fase **Markup** | Struktur **Equilibrium**. Liq: **55.0% BUY / 45.0% SELL**. Sweep: — • FVG: —.



NZDUSD.pkn

BUY 59%

STRATEGY TARGET

| | | | |
|---------------|----------------|----------|--------------------------|
| ENTRY | 0.59021 | PIVOT | 0.58489 |
| TP (ATR ×3) | 0.59287 | OB ZONE | 0.58340 - 0.58379 |
| SL (ATR ×1.5) | 0.58935 | FVG ZONE | 0.58928 - 0.58975 |

INSTITUTIONAL SNR (TYPICAL D1 PIVOT)

| | | | |
|------------|----------------|------------|----------------|
| R3 Typical | 0.59036 | S1 Typical | 0.58241 |
| R2 Typical | 0.58887 | S2 Typical | 0.58092 |
| R1 Typical | 0.58639 | S3 Typical | 0.57844 |
| PIVOT (PP) | | | 0.58489 |

D1 OHLC (PREV SESSION)

| | | | |
|-------|----------------|------|----------------|
| Open | 0.58730 | High | 0.58737 |
| Close | 0.58391 | Low | 0.58340 |

● OPSI BUY: Jika tembus Buy Stop di **0.59053**. SL: **0.58935** | TP: **0.59287**.

● OPSI SELL (Berlawanan Arah): Stop **0.58990** | SL: **0.59107** | TP: **0.58756**.

AI PREDICTION: BULLISH (59%)

LEMAH • ASIAN SESSION

Indikator Real: RSI(**70.9**) • MACD: **+0.00004** • Pattern: **PIN_BEAR** • PDH/PDL: **↑ Breakout**

SMC Insight: Fase **Markup** | Struktur **Equilibrium**. Liq: **55.0% BUY / 45.0% SELL**. Sweep: — • FVG: —.



JPK.pk

BUY 60%

STRATEGY TARGET

| | | | |
|---------------|--------------|----------|----------------------|
| ENTRY | 65096 | PIVOT | 64992 |
| TP (ATR ×3) | 66358 | OB ZONE | 61625 - 61811 |
| SL (ATR ×1.5) | 64687 | FVG ZONE | 64650 - 64873 |

INSTITUTIONAL SNR (TYPICAL D1 PIVOT)

| | | | |
|------------|--------------|------------|--------------|
| R3 Typical | 66091 | S1 Typical | 64667 |
| R2 Typical | 65704 | S2 Typical | 64280 |
| R1 Typical | 65379 | S3 Typical | 63955 |
| PIVOT (PP) | | | 64992 |

D1 OHLC (PREV SESSION)

| | | | |
|-------|--------------|------|--------------|
| Open | 65247 | High | 65318 |
| Close | 65053 | Low | 64606 |

● OPSI BUY: Jika tembus Buy Stop di 65244. SL: 64687 | TP: 66358.

● OPSI SELL (Berlawanan Arah): Stop 64947 | SL: 65504 | TP: 63834.

AI PREDICTION: BULLISH (60%)

LEMAH • ASIAN SESSION

📊 Indikator Real: RSI(48.4) • MACD: -135.27094 • Pattern: NONE • PDH/PDL: ↑ Breakout

📈 SMC Insight: Fase Markup | Struktur CHoCH (Change of Character). Liq: 55.0% BUY / 45.0% SELL. Sweep: — • FVG: —.



HKK.pk

SELL 62%

STRATEGY TARGET

| | | | |
|---------------|--------------|----------|----------------------|
| ENTRY | 25328 | PIVOT | 25600 |
| TP (ATR ×3) | 24968 | OB ZONE | 25781 - 25834 |
| SL (ATR ×1.5) | 25445 | FVG ZONE | 25392 - 25455 |

INSTITUTIONAL SNR (TYPICAL D1 PIVOT)

| | | | |
|------------|--------------|------------|--------------|
| R3 Typical | 26105 | S1 Typical | 25431 |
| R2 Typical | 25937 | S2 Typical | 25262 |
| R1 Typical | 25768 | S3 Typical | 25094 |
| PIVOT (PP) | | | 25600 |

D1 OHLC (PREV SESSION)

| | | | |
|-------|--------------|------|--------------|
| Open | 25622 | High | 25768 |
| Close | 25599 | Low | 25431 |

● **OPSI SELL: Jika tembus Sell Stop di 25286. SL: 25445 | TP: 24968.**

● OPSI BUY (Berlawanan Arah): Stop 25371 | SL: 25212 | TP: 25689.

AI PREDICTION: BEARISH (62%)

LEMAH • ASIAN SESSION

📊 Indikator Real: RSI(30.0) • MACD: **-26.58588** • Pattern: **PIN_BULL** • PDH/PDL: **↓ Breakdown**

📈 SMC Insight: Fase **Markdown** | Struktur **CHoCH (Change of Character)**. Liq: **45.0% BUY / 55.0% SELL**. Sweep: — • FVG: —.



DJ.pk

BUY 59%

STRATEGY TARGET

| | | | |
|---------------|--------------|----------|----------------------|
| ENTRY | 50791 | PIVOT | 50680 |
| TP (ATR ×3) | 51234 | OB ZONE | 50425 - 50490 |
| SL (ATR ×1.5) | 50648 | FVG ZONE | 50634 - 50713 |

INSTITUTIONAL SNR (TYPICAL D1 PIVOT)

| | | | |
|------------|--------------|------------|--------------|
| R3 Typical | 51539 | S1 Typical | 50333 |
| R2 Typical | 51283 | S2 Typical | 50077 |
| R1 Typical | 50936 | S3 Typical | 49730 |
| PIVOT (PP) | | | 50680 |

D1 OHLC (PREV SESSION)

| | | | |
|-------|--------------|------|--------------|
| Open | 50976 | High | 51028 |
| Close | 50588 | Low | 50425 |

● OPSI BUY: Jika tembus Buy Stop di 50843. SL: 50648 | TP: 51234.

● OPSI SELL (Berlawanan Arah): Stop 50739 | SL: 50934 | TP: 50348.

AI PREDICTION: BULLISH (59%)

LEMAH • ASIAN SESSION

📊 Indikator Real: RSI(57.2) • MACD: +10.30695 • Pattern: **PIN_BEAR** • PDH/PDL: ↑ **Breakout**

📈 SMC Insight: Fase **Markup** | Struktur **CHoCH (Change of Character)**. Liq: **55.0% BUY / 45.0% SELL**. Sweep: — • FVG: —.



NQ.pk

BUY 61%

STRATEGY TARGET

| | | | |
|---------------|-----------------|----------|----------------------------|
| ENTRY | 30081.50 | PIVOT | 30002.17 |
| TP (ATR ×3) | 30465.03 | OB ZONE | 29877.50 - 29933.90 |
| SL (ATR ×1.5) | 29957.42 | FVG ZONE | 29946.14 - 30013.82 |

INSTITUTIONAL SNR (TYPICAL D1 PIVOT)

| | | | |
|------------|-----------------|------------|-----------------|
| R3 Typical | 30675.58 | S1 Typical | 29845.08 |
| R2 Typical | 30417.42 | S2 Typical | 29586.92 |
| R1 Typical | 30260.33 | S3 Typical | 29429.83 |
| PIVOT (PP) | | | 30002.17 |

D1 OHLC (PREV SESSION)

| | | | |
|-------|-----------------|------|-----------------|
| Open | 29821.00 | High | 30159.25 |
| Close | 30103.25 | Low | 29744.00 |

● OPSI BUY: Jika tembus Buy Stop di 30126.62. SL: 29957.42 | TP: 30465.03.

● OPSI SELL (Berlawanan Arah): Stop 30036.38 | SL: 30205.58 | TP: 29697.97.

AI PREDICTION: BULLISH (61%)

LEMAH • ASIAN SESSION

📊 Indikator Real: RSI(45.9) • MACD: -17.07529 • Pattern: **NONE** • PDH/PDL: ↑ **Breakout**

📈 SMC Insight: Fase Consolidation | Struktur CHoCH (Change of Character). Liq: 59.3% BUY / 40.7% SELL. Sweep: — • FVG: —.



SP.pk

BUY 56%

STRATEGY TARGET

| | | | |
|---------------|----------------|----------|--------------------------|
| ENTRY | 7550.00 | PIVOT | 7537.17 |
| TP (ATR ×3) | 7605.43 | OB ZONE | 7515.00 - 7523.15 |
| SL (ATR ×1.5) | 7532.07 | FVG ZONE | 7530.44 - 7540.22 |

INSTITUTIONAL SNR (TYPICAL D1 PIVOT)

| | | | |
|------------|----------------|------------|----------------|
| R3 Typical | 7595.58 | S1 Typical | 7519.08 |
| R2 Typical | 7575.42 | S2 Typical | 7498.92 |
| R1 Typical | 7557.33 | S3 Typical | 7480.83 |
| PIVOT (PP) | | | 7537.17 |

D1 OHLC (PREV SESSION)

| | | | |
|-------|----------------|------|----------------|
| Open | 7540.25 | High | 7555.25 |
| Close | 7539.25 | Low | 7517.00 |

● OPSI BUY: Jika tembus Buy Stop di 7556.52. SL: 7532.07 | TP: 7605.43.

● OPSI SELL (Berlawanan Arah): Stop 7543.48 | SL: 7567.93 | TP: 7494.57.

AI PREDICTION: BULLISH (56%)

LEMAH • ASIAN SESSION

📊 Indikator Real: RSI(51.1) • MACD: -0.50297 • Pattern: NONE • PDH/PDL: ↑ Breakout

📈 SMC Insight: Fase Consolidation | Struktur CHoCH (Change of Character). Liq: 55.0% BUY / 45.0% SELL. Sweep: ✓ Aktif • FVG: ✓ Gap Terbuka.



EURJPY.pkn

BUY 58%

STRATEGY TARGET

| | | | |
|---------------|----------------|----------|--------------------------|
| ENTRY | 185.465 | PIVOT | 185.171 |
| TP (ATR ×3) | 186.096 | OB ZONE | 185.135 - 185.228 |
| SL (ATR ×1.5) | 185.261 | FVG ZONE | 185.242 - 185.354 |

INSTITUTIONAL SNR (TYPICAL D1 PIVOT)

| | | | |
|------------|----------------|------------|----------------|
| R3 Typical | 185.946 | S1 Typical | 184.984 |
| R2 Typical | 185.652 | S2 Typical | 184.690 |
| R1 Typical | 185.465 | S3 Typical | 184.503 |
| PIVOT (PP) | | | 185.171 |

D1 OHLC (PREV SESSION)

| | | | |
|-------|----------------|------|----------------|
| Open | 184.996 | High | 185.357 |
| Close | 185.279 | Low | 184.876 |

● OPSI BUY: Jika tembus Buy Stop di 185.539. SL: 185.261 | TP: 186.096.

● OPSI SELL (Berlawanan Arah): Stop 185.391 | SL: 185.669 | TP: 184.834.

AI PREDICTION: BULLISH (58%)

LEMAH • ASIAN SESSION

📊 Indikator Real: RSI(40.7) • MACD: -0.02329 • Pattern: **BULLISH_ENGULF** • PDH/PDL: ↑

Breakout

📈 SMC Insight: Fase Consolidation | Struktur CHoCH (Change of Character). Liq: 55.0% BUY / 45.0% SELL. Sweep: — • FVG: —.



GBPJPY.pkn

SELL 58%

STRATEGY TARGET

| | | | |
|---------------|----------------|----------|--------------------------|
| ENTRY | 214.163 | PIVOT | 214.303 |
| TP (ATR ×3) | 213.410 | OB ZONE | 214.402 - 214.513 |
| SL (ATR ×1.5) | 214.407 | FVG ZONE | 214.296 - 214.429 |

INSTITUTIONAL SNR (TYPICAL D1 PIVOT)

| | | | |
|------------|----------------|------------|----------------|
| R3 Typical | 215.248 | S1 Typical | 213.932 |
| R2 Typical | 214.961 | S2 Typical | 213.645 |
| R1 Typical | 214.590 | S3 Typical | 213.274 |
| PIVOT (PP) | | | 214.303 |

D1 OHLC (PREV SESSION)

| | | | |
|-------|----------------|------|----------------|
| Open | 214.591 | High | 214.674 |
| Close | 214.219 | Low | 214.016 |

● **OPSI SELL: Jika tembus Sell Stop di 214.074. SL: 214.407 | TP: 213.410.**

● OPSI BUY (Berlawanan Arah): Stop 214.252 | SL: 213.919 | TP: 214.916.

AI PREDICTION: BEARISH (58%)

LEMAH • ASIAN SESSION

📊 Indikator Real: RSI(42.7) • MACD: -0.00418 • Pattern: **BULLISH_ENGULF** • PDH/PDL: ↓

Breakdown

📈 SMC Insight: Fase Consolidation | Struktur CHoCH (Change of Character). Liq: 45.0% BUY / 55.0% SELL. Sweep: ✓ Aktif • FVG: —.



CHFJPY.pkn

SELL 61%

STRATEGY TARGET

| | | | |
|---------------|----------------|----------|--------------------------|
| ENTRY | 202.657 | PIVOT | 202.796 |
| TP (ATR ×3) | 201.929 | OB ZONE | 203.041 - 203.148 |
| SL (ATR ×1.5) | 202.893 | FVG ZONE | 202.785 - 202.914 |

INSTITUTIONAL SNR (TYPICAL D1 PIVOT)

| | | | |
|------------|----------------|------------|----------------|
| R3 Typical | 203.451 | S1 Typical | 202.555 |
| R2 Typical | 203.244 | S2 Typical | 202.348 |
| R1 Typical | 203.003 | S3 Typical | 202.107 |
| PIVOT (PP) | | | 202.796 |

D1 OHLC (PREV SESSION)

| | | | |
|-------|----------------|------|----------------|
| Open | 202.997 | High | 203.037 |
| Close | 202.762 | Low | 202.589 |

● **OPSI SELL: Jika tembus Sell Stop di 202.571. SL: 202.893 | TP: 201.929.**

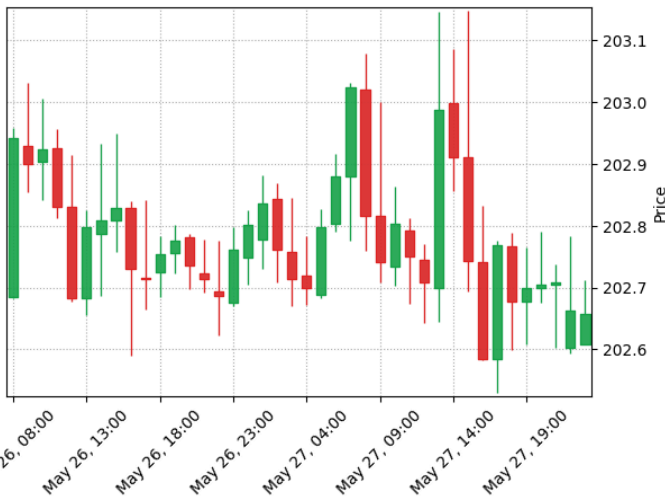
● OPSI BUY (Berlawanan Arah): Stop 202.743 | SL: 202.421 | TP: 203.385.

AI PREDICTION: **BEARISH (61%)**

LEMAH • ASIAN SESSION

📊 Indikator Real: RSI(46.5) • MACD: -0.01088 • Pattern: **NONE** • PDH/PDL: ↓ **Breakdown**

📈 SMC Insight: Fase Markdown | Struktur CHoCH (Change of Character). Liq: 45.0% **BUY** / 55.0% **SELL**. Sweep: — • FVG: —.



AUDJPY.pkn

NEUTRAL 52%

STRATEGY TARGET

| | | | |
|---------------|----------------|----------|--------------------------|
| ENTRY | 113.890 | PIVOT | 114.070 |
| TP (ATR ×3) | 113.401 | OB ZONE | 113.847 - 113.933 |
| SL (ATR ×1.5) | 114.048 | FVG ZONE | 113.624 - 114.308 |

INSTITUTIONAL SNR (TYPICAL D1 PIVOT)

| | | | |
|------------|----------------|------------|----------------|
| R3 Typical | 114.874 | S1 Typical | 113.858 |
| R2 Typical | 114.578 | S2 Typical | 113.562 |
| R1 Typical | 114.366 | S3 Typical | 113.350 |
| PIVOT (PP) | | | 114.070 |

D1 OHLC (PREV SESSION)

| | | | |
|-------|----------------|------|----------------|
| Open | 113.999 | High | 114.281 |
| Close | 114.155 | Low | 113.773 |

● NEUTRAL — Tunggu konfirmasi arah sebelum entry.

● BUY Stop 113.947 | SL 113.732 | TP 114.379

● SELL Stop 113.833 | SL 114.048 | TP 113.401

AI PREDICTION: NEUTRAL (52%)

LEMAH • ASIAN SESSION

Indikator Real: RSI(53.6) • MACD: +0.01306 • Pattern: NONE • PDH/PDL: ↓ Breakdown

SMC Insight: Fase Ranging | Struktur Equilibrium. Liq: 51.0% BUY / 49.0% SELL. Sweep: — • FVG: —.



EURGBP.pkn

BUY 59%

STRATEGY TARGET

| | | | |
|---------------|----------------|----------|--------------------------|
| ENTRY | 0.86590 | PIVOT | 0.86394 |
| TP (ATR ×3) | 0.86884 | OB ZONE | 0.86426 - 0.86469 |
| SL (ATR ×1.5) | 0.86495 | FVG ZONE | 0.86486 - 0.86538 |

INSTITUTIONAL SNR (TYPICAL D1 PIVOT)

| | | | |
|------------|----------------|------------|----------------|
| R3 Typical | 0.86898 | S1 Typical | 0.86286 |
| R2 Typical | 0.86700 | S2 Typical | 0.86088 |
| R1 Typical | 0.86592 | S3 Typical | 0.85980 |
| PIVOT (PP) | | | 0.86394 |

D1 OHLC (PREV SESSION)

| | | | |
|-------|----------------|------|----------------|
| Open | 0.86202 | High | 0.86503 |
| Close | 0.86483 | Low | 0.86197 |

● OPSI BUY: Jika tembus Buy Stop di **0.86625**. SL: **0.86495** | TP: **0.86884**.

● OPSI SELL (Berlawanan Arah): Stop **0.86555** | SL: **0.86685** | TP: **0.86296**.

AI PREDICTION: BULLISH (59%)

LEMAH • ASIAN SESSION

📊 Indikator Real: RSI(**48.8**) • MACD: **-0.00010** • Pattern: **NONE** • PDH/PDL: ↑ **Breakout**

📈 SMC Insight: Fase Consolidation | Struktur Equilibrium. Liq: **55.0% BUY / 45.0% SELL**. Sweep: ✓
Aktif • FVG: —.



EURCHF.pkn

BUY 64%

STRATEGY TARGET

| | | | |
|---------------|----------------|----------|--------------------------|
| ENTRY | 0.91505 | PIVOT | 0.91273 |
| TP (ATR ×3) | 0.91853 | OB ZONE | 0.91287 - 0.91338 |
| SL (ATR ×1.5) | 0.91392 | FVG ZONE | 0.91382 - 0.91444 |

INSTITUTIONAL SNR (TYPICAL D1 PIVOT)

| | | | |
|------------|----------------|------------|----------------|
| R3 Typical | 0.91864 | S1 Typical | 0.91140 |
| R2 Typical | 0.91635 | S2 Typical | 0.90911 |
| R1 Typical | 0.91502 | S3 Typical | 0.90778 |
| PIVOT (PP) | | | 0.91273 |

D1 OHLC (PREV SESSION)

| | | | |
|-------|----------------|------|----------------|
| Open | 0.91119 | High | 0.91405 |
| Close | 0.91370 | Low | 0.91043 |

● OPSI BUY: Jika tembus Buy Stop di 0.91546. SL: 0.91392 | TP: 0.91853.

● OPSI SELL (Berlawanan Arah): Stop 0.91464 | SL: 0.91618 | TP: 0.91157.

AI PREDICTION: BULLISH (64%)

LEMAH • ASIAN SESSION

📊 Indikator Real: RSI(46.5) • MACD: -0.00007 • Pattern: NONE • PDH/PDL: ↑ Breakout

📈 SMC Insight: Fase Markup | Struktur CHoCH (Change of Character). Liq: 55.0% BUY / 45.0% SELL. Sweep: — • FVG: —.



GBPAUD.pkn

BUY 59%

STRATEGY TARGET

| | | | |
|---------------|----------------|----------|--------------------------|
| ENTRY | 1.87979 | PIVOT | 1.87736 |
| TP (ATR ×3) | 1.88790 | OB ZONE | 1.87252 - 1.87371 |
| SL (ATR ×1.5) | 1.87717 | FVG ZONE | 1.87693 - 1.87836 |

INSTITUTIONAL SNR (TYPICAL D1 PIVOT)

| | | | |
|------------|----------------|------------|----------------|
| R3 Typical | 1.89313 | S1 Typical | 1.87129 |
| R2 Typical | 1.88828 | S2 Typical | 1.86644 |
| R1 Typical | 1.88221 | S3 Typical | 1.86037 |
| PIVOT (PP) | | | 1.87736 |

D1 OHLC (PREV SESSION)

| | | | |
|-------|----------------|------|----------------|
| Open | 1.88197 | High | 1.88344 |
| Close | 1.87613 | Low | 1.87252 |

● OPSI BUY: Jika tembus Buy Stop di **1.88074**. SL: **1.87717** | TP: **1.88790**.

● OPSI SELL (Berlawanan Arah): Stop **1.87884** | SL: **1.88241** | TP: **1.87168**.

AI PREDICTION: BULLISH (59%)

LEMAH • ASIAN SESSION

📊 Indikator Real: RSI(**33.7**) • MACD: **-0.00042** • Pattern: **DOJI** • PDH/PDL: ↑ **Breakout**

📈 SMC Insight: Fase Consolidation | Struktur **CHoCH (Change of Character)**. Liq: **55.0% BUY / 45.0% SELL**. Sweep: — • FVG: —.



AUDNZD.pkn

BUY 52%

STRATEGY TARGET

| | | | |
|---------------|----------------|----------|--------------------------|
| ENTRY | 1.21019 | PIVOT | 1.22588 |
| TP (ATR ×3) | 1.21635 | OB ZONE | 1.20643 - 1.20734 |
| SL (ATR ×1.5) | 1.20820 | FVG ZONE | 1.20802 - 1.20910 |

INSTITUTIONAL SNR (TYPICAL D1 PIVOT)

| | | | |
|------------|----------------|------------|----------------|
| R3 Typical | 1.23730 | S1 Typical | 1.22334 |
| R2 Typical | 1.23286 | S2 Typical | 1.21890 |
| R1 Typical | 1.23032 | S3 Typical | 1.21636 |
| PIVOT (PP) | | | 1.22588 |

D1 OHLC (PREV SESSION)

| | | | |
|-------|----------------|------|----------------|
| Open | 1.22175 | High | 1.22842 |
| Close | 1.22778 | Low | 1.22144 |

● OPSI BUY: Jika tembus Buy Stop di **1.21091**. SL: **1.20820** | TP: **1.21635**.

● OPSI SELL (Berlawanan Arah): Stop **1.20947** | SL: **1.21218** | TP: **1.20403**.

AI PREDICTION: NEUTRAL (52%)

LEMAH • ASIAN SESSION

📊 Indikator Real: RSI(**27.6**) • MACD: **+0.00010** • Pattern: **NONE** • PDH/PDL: | **Breakdown**

📈 SMC Insight: Fase **Accumulation** | Struktur **Equilibrium**. Liq: **82.9% BUY / 17.1% SELL**. Sweep: ✓
Aktif • FVG: —.



EURAUD.pkn

BUY 67%

STRATEGY TARGET

| | | | |
|---------------|----------------|----------|--------------------------|
| ENTRY | 1.62791 | PIVOT | 1.62280 |
| TP (ATR ×3) | 1.63396 | OB ZONE | 1.61988 - 1.62077 |
| SL (ATR ×1.5) | 1.62595 | FVG ZONE | 1.62577 - 1.62684 |

INSTITUTIONAL SNR (TYPICAL D1 PIVOT)

| | | | |
|------------|----------------|------------|----------------|
| R3 Typical | 1.63143 | S1 Typical | 1.61999 |
| R2 Typical | 1.62852 | S2 Typical | 1.61708 |
| R1 Typical | 1.62571 | S3 Typical | 1.61427 |
| PIVOT (PP) | | | 1.62280 |

D1 OHLC (PREV SESSION)

| | | | |
|-------|----------------|------|----------------|
| Open | 1.62261 | High | 1.62560 |
| Close | 1.62291 | Low | 1.61988 |

● OPSI BUY: Jika tembus Buy Stop di **1.62862**. SL: **1.62595** | TP: **1.63396**.

● OPSI SELL (Berlawanan Arah): Stop **1.62720** | SL: **1.62987** | TP: **1.62186**.

AI PREDICTION: BULLISH (67%)

LEMAH • ASIAN SESSION

📊 Indikator Real: RSI(**35.0**) • MACD: **-0.00052** • Pattern: **PIN_BULL** • PDH/PDL: ↑ **Breakout**

📈 SMC Insight: Fase Markup | Struktur BOS (Break of Structure). Liq: **55.0% BUY / 45.0% SELL**.
Sweep: — • FVG: —.



EURCAD.pkn

BUY 57%

STRATEGY TARGET

| | | | |
|---------------|----------------|----------|--------------------------|
| ENTRY | 1.60867 | PIVOT | 1.60598 |
| TP (ATR ×3) | 1.61419 | OB ZONE | 1.60441 - 1.60522 |
| SL (ATR ×1.5) | 1.60688 | FVG ZONE | 1.60672 - 1.60770 |

INSTITUTIONAL SNR (TYPICAL D1 PIVOT)

| | | | |
|------------|----------------|------------|----------------|
| R3 Typical | 1.61263 | S1 Typical | 1.60405 |
| R2 Typical | 1.61027 | S2 Typical | 1.60169 |
| R1 Typical | 1.60834 | S3 Typical | 1.59976 |
| PIVOT (PP) | | | 1.60598 |

D1 OHLC (PREV SESSION)

| | | | |
|-------|----------------|------|----------------|
| Open | 1.60664 | High | 1.60792 |
| Close | 1.60640 | Low | 1.60363 |

● OPSI BUY: Jika tembus Buy Stop di **1.60932**. SL: **1.60688** | TP: **1.61419**.

● OPSI SELL (Berlawanan Arah): Stop **1.60802** | SL: **1.61046** | TP: **1.60315**.

AI PREDICTION: BULLISH (57%)

LEMAH • ASIAN SESSION

📊 Indikator Real: RSI(**38.2**) • MACD: **-0.00018** • Pattern: **NONE** • PDH/PDL: ↑ **Breakout**

📈 SMC Insight: Fase **Consolidation** | Struktur **Equilibrium**. Liq: **55.0% BUY / 45.0% SELL**. Sweep: —
• FVG: —.



GBPCHF.pkn

BUY 56%

STRATEGY TARGET

| | | | |
|---------------|----------------|----------|--------------------------|
| ENTRY | 1.05660 | PIVOT | 1.05645 |
| TP (ATR ×3) | 1.06110 | OB ZONE | 1.05387 - 1.05453 |
| SL (ATR ×1.5) | 1.05514 | FVG ZONE | 1.05501 - 1.05581 |

INSTITUTIONAL SNR (TYPICAL D1 PIVOT)

| | | | |
|------------|----------------|------------|----------------|
| R3 Typical | 1.06121 | S1 Typical | 1.05469 |
| R2 Typical | 1.05971 | S2 Typical | 1.05319 |
| R1 Typical | 1.05795 | S3 Typical | 1.05143 |
| PIVOT (PP) | | | 1.05645 |

D1 OHLC (PREV SESSION)

| | | | |
|-------|----------------|------|----------------|
| Open | 1.05698 | High | 1.05820 |
| Close | 1.05620 | Low | 1.05494 |

● OPSI BUY: Jika tembus Buy Stop di **1.05713**. SL: **1.05514** | TP: **1.06110**.

● OPSI SELL (Berlawanan Arah): Stop **1.05607** | SL: **1.05806** | TP: **1.05210**.

AI PREDICTION: BULLISH (56%)

LEMAH • ASIAN SESSION

📊 Indikator Real: RSI(**46.6**) • MACD: **+0.00003** • Pattern: **NONE** • PDH/PDL: ↑ **Breakout**

📈 SMC Insight: Fase **Markup** | Struktur **CHoCH (Change of Character)**. Liq: **55.0% BUY / 45.0% SELL**. Sweep: — • FVG: —.

