

# PANEN PRIME

## | INSTITUTIONAL MARKET ANALYSIS

Selasa, 19 Mei 2026

THEME EDITION: BLACK LIGHT • PAGI

Analisis SMC & AI Confluence komprehensif untuk navigasi market yang presisi secara profesional.

## GLOBAL MARKET SENTIMENT

### USD BIAS: **BULLISH**

**USD DRIVER:** USD menguat didorong oleh data ekonomi yang solid dan ekspektasi kebijakan moneter ketat (Hawkish) dari Federal Reserve.

## INSTITUTIONAL BREAKING NEWS

**Dolar naik untuk hari kelima berturut-turut seiring meningkatnya spekulasi kenaikan suku bunga Fed**

Source: CNA • Bias: **BULLISH**

**Dolar naik untuk hari kelima berturut-turut seiring meningkatnya spekulasi kenaikan suku bunga Fed**

Source: Yahoo Entertainment • Bias: **BULLISH**

**Dolar mendorong kenaikan imbal hasil ke kenaikan mingguan terbesar dalam dua bulan**

Source: CNBC • Bias: **BULLISH**

**Apakah bagus untuk mencapai 42.000 pada tahun 2028? Makalah baru yang mempelajari siklus pasar mengatakan hal ini mungkin terjadi jika faktor-faktor ini selaras**

Source: The Times of India • Bias: **BULLISH**

**Emas Menuju Penurunan Mingguan Karena Kekhawatiran Inflasi Yang Dipicu Minyak; pasar menantikan pembicaraan Trump-Xi**

Source: The Times of India • Bias: **BEARISH**

**Rupiah India merosot ke rekor terendah mendekati 96 per USD karena semakin mendalamnya risiko energi**

Source: The Times of India • Bias: **NETRAL**

**Whale kekurangan \$70 juta dalam kripto dan teknologi: Haruskah pedagang Bitcoin khawatir?**

Source: Cointelegraph • Bias: **BEARISH**

**Harga Bitcoin menargetkan \$79K karena inflasi PPI AS mencapai level tertinggi sejak 2022**

Source: Cointelegraph • Bias: **NETRAL**

## INSTITUTIONAL LIQUIDITY PULSE (ALL PAIRS)



## INSTITUTIONAL ECONOMIC CALENDAR

WAKTU	CUR	KEGIATAN	DAMPAK	AKTUAL	KONSENSUS	SBLMNYA
SELASA, 19 MEI						
08:30	AUD	Risalah Rapat Kebijakan Moneter		-	-	-
13:00	GBP	Perubahan Jumlah Penggugat		-	23.1K	26.8K
13:00	GBP	Indeks Pendapatan Rata-rata 3 bulan/ tahun		-	3.8%	3.8%
21:00	USD	Penjualan Rumah Tertunda m/m		-	1.0%	1.5%
RABU, 20 MEI						
13:00	GBP	IHK tahun/tahun		-	3.0%	3.3%
20:15	GBP	Dengar Pendapat Laporan Kebijakan Moneter		-	-	-

*\*Data disinkronisasi secara real-time dari institutional feeds (ForexFactory/Investing). Dampak Merah (High) wajib diwaspadai.*

# XAUUSD.pkn

BUY 84%

## STRATEGY TARGET

ENTRY	4578.50	PIVOT	4529.63
TP 1 (Fibo 161.8)	4614.13	OB ZONE	4483.50 - 4487.69
SL (Institutional)	4566.97	FVG ZONE	4562.78 - 4569.07

## INSTITUTIONAL SNR (TYPICAL D1 PIVOT)

R3 Typical	4650.87	S1 Typical	4500.67
R2 Typical	4604.73	S2 Typical	4454.53
R1 Typical	4575.77	S3 Typical	4425.57
PIVOT (PP)			4529.63

● OPSI BUY: Jika tembus Buy Stop di 4582.69. SL: 4566.97 (Fibo) | TP: 4614.13 (Fibo 161.8).

● OPSI SELL: Jika tembus Sell Stop di 4574.31. SL: 4590.03 (Fibo) | TP: 4542.87 (Fibo 161.8).

## AI PREDICTION: **BULLISH (89%)** KUAT SMC STRATEGY

### SMC Insight & Market Narrative:

Market berada dalam fase **Markup** dengan struktur **CHoCH (Change of Character)**. Analisa confluence H1/H4 menunjukkan dominasi institusional sebesar 66.9% BUY / 33.1% SELL. Target OB di **4483.50 - 4487.69** dan FVG di **4562.78 - 4569.07** telah terkonfirmasi.



# XAGUSD.pkn

BUY 83%

## STRATEGY TARGET

ENTRY	78.625	PIVOT	<b>75.637</b>
TP 1 (Fibo 161.8)	<b>80.145</b>	OB ZONE	<b>74.110 - 74.289</b>
SL (Institutional)	<b>78.133</b>	FVG ZONE	<b>77.955 - 78.223</b>

## INSTITUTIONAL SNR (TYPICAL D1 PIVOT)

R3 Typical	80.298	S1 Typical	<b>74.028</b>
R2 Typical	78.772	S2 Typical	<b>72.502</b>
R1 Typical	77.163	S3 Typical	<b>70.893</b>
PIVOT (PP)			<b>75.637</b>

● OPSI BUY: Jika tembus Buy Stop di 78.804. SL: 78.133 (Fibo) | TP: 80.145 (Fibo 161.8).

● OPSI SELL: Jika tembus Sell Stop di 78.446. SL: 79.117 (Fibo) | TP: 77.105 (Fibo 161.8).

AI PREDICTION: **BULLISH (88%)** KUAT SMC STRATEGY

### SMC Insight & Market Narrative:

Market berada dalam fase **Markup** dengan struktur **CHoCH (Change of Character)**. Analisa confluence H1/H4 menunjukkan dominasi institusional sebesar 66.3% BUY / 33.7% SELL. Target OB di **74.110 - 74.289** dan FVG di **77.955 - 78.223** telah terkonfirmasi.



# CLSK.pkn

BUY 86%

## STRATEGY TARGET

ENTRY	102.47	PIVOT	<b>103.19</b>
TP 1 (Fibo 161.8)	<b>106.73</b>	OB ZONE	<b>98.60 - 99.10</b>
SL (Institutional)	<b>101.09</b>	FVG ZONE	<b>100.59 - 101.34</b>

## INSTITUTIONAL SNR (TYPICAL D1 PIVOT)

R3 Typical	106.74	S1 Typical	<b>102.00</b>
R2 Typical	105.56	S2 Typical	<b>100.82</b>
R1 Typical	104.37	S3 Typical	<b>99.63</b>
PIVOT (PP)			<b>103.19</b>

● OPSI BUY: Jika tembus Buy Stop di 102.97. SL: 101.09 (Fibo) | TP: 106.73 (Fibo 161.8).

● OPSI SELL: Jika tembus Sell Stop di 101.97. SL: 103.85 (Fibo) | TP: 98.21 (Fibo 161.8).

## AI PREDICTION: **BULLISH (91%)** KUAT SMC STRATEGY

### SMC Insight & Market Narrative:

Market berada dalam fase **Accumulation** dengan struktur **CHoCH (Change of Character)**. Analisa confluence H1/H4 menunjukkan dominasi institusional sebesar 65.4% BUY / 34.6% SELL. Target OB di **98.60 - 99.10** dan FVG di **100.59 - 101.34** telah terkonfirmasi.



# EURUSD.pkn

BUY 95%

## STRATEGY TARGET

ENTRY	1.16618	PIVOT	<b>1.16415</b>
TP 1 (Fibo 161.8)	<b>1.16830</b>	OB ZONE	<b>1.16117 - 1.16142</b>
SL (Institutional)	<b>1.16549</b>	FVG ZONE	<b>1.16524 - 1.16562</b>

## INSTITUTIONAL SNR (TYPICAL D1 PIVOT)

R3 Typical	1.17134	S1 Typical	<b>1.16103</b>
R2 Typical	1.16930	S2 Typical	<b>1.15899</b>
R1 Typical	1.16618	S3 Typical	<b>1.15587</b>
PIVOT (PP)			<b>1.16415</b>

● OPSI BUY: Jika tembus Buy Stop di 1.16643. SL: 1.16549 (Fibo) | TP: 1.16830 (Fibo 161.8).

● OPSI SELL: Jika tembus Sell Stop di 1.16593. SL: 1.16687 (Fibo) | TP: 1.16406 (Fibo 161.8).

## AI PREDICTION: **BULLISH (98%)** KUAT SMC STRATEGY



### SMC Insight & Market Narrative:

Market berada dalam fase **Markup** dengan struktur **BOS (Break of Structure)**. Analisa confluence H1/H4 menunjukkan dominasi institusional sebesar 91.8% BUY / 8.2% SELL. Target OB di **1.16117 - 1.16142** dan FVG di **1.16524 - 1.16562** telah terkonfirmasi.



# GBPUSD.pkn

BUY 98%

## STRATEGY TARGET

ENTRY	1.34358	PIVOT	<b>1.33463</b>
TP 1 (Fibo 161.8)	<b>1.34827</b>	OB ZONE	<b>1.33039 - 1.33094</b>
SL (Institutional)	<b>1.34206</b>	FVG ZONE	<b>1.34151 - 1.34234</b>

## INSTITUTIONAL SNR (TYPICAL D1 PIVOT)

R3 Typical	1.34601	S1 Typical	<b>1.32934</b>
R2 Typical	1.34296	S2 Typical	<b>1.32629</b>
R1 Typical	1.33767	S3 Typical	<b>1.32101</b>
PIVOT (PP)			<b>1.33463</b>

● OPSI BUY: Jika tembus Buy Stop di 1.34413. SL: 1.34206 (Fibo) | TP: 1.34827 (Fibo 161.8).

● OPSI SELL: Jika tembus Sell Stop di 1.34303. SL: 1.34510 (Fibo) | TP: 1.33889 (Fibo 161.8).

## AI PREDICTION: **BULLISH (98%)** KUAT SMC STRATEGY

### SMC Insight & Market Narrative:

Market berada dalam fase **Markup** dengan struktur **BOS (Break of Structure)**. Analisa confluence H1/H4 menunjukkan dominasi institusional sebesar 95% BUY / 5% SELL. Target OB di **1.33039 - 1.33094** dan FVG di **1.34151 - 1.34234** telah terkonfirmasi.



# USDJPY.pkn

SELL 87%

## STRATEGY TARGET

ENTRY	158.814	PIVOT	<b>158.620</b>
TP 1 (Fibo 161.8)	<b>158.510</b>	OB ZONE	<b>159.047 - 159.083</b>
SL (Institutional)	<b>158.912</b>	FVG ZONE	<b>158.894 - 158.948</b>

## INSTITUTIONAL SNR (TYPICAL D1 PIVOT)

R3 Typical	159.517	S1 Typical	<b>158.395</b>
R2 Typical	159.181	S2 Typical	<b>158.059</b>
R1 Typical	158.956	S3 Typical	<b>157.834</b>
PIVOT (PP)			<b>158.620</b>

● OPSI BUY: Jika tembus Buy Stop di 158.850. SL: 158.716 (Fibo) | TP: 159.118 (Fibo 161.8).

● OPSI SELL: Jika tembus Sell Stop di 158.778. SL: 158.912 (Fibo) | TP: 158.510 (Fibo 161.8).

## AI PREDICTION: **BEARISH (87%)** KUAT SMC STRATEGY

### SMC Insight & Market Narrative:

Market berada dalam fase **Accumulation** dengan struktur **BOS (Break of Structure)**. Analisa confluence H1/H4 menunjukkan dominasi institusional sebesar 27.4% BUY / 72.6% SELL. Target OB di **159.047 - 159.083** dan FVG di **158.894 - 158.948** telah terkonfirmasi.



# AUDUSD.pkn

BUY 90%

## STRATEGY TARGET

ENTRY	0.71741	PIVOT	<b>0.71738</b>
TP 1 (Fibo 161.8)	<b>0.71958</b>	OB ZONE	<b>0.71230 - 0.71256</b>
SL (Institutional)	<b>0.71671</b>	FVG ZONE	<b>0.71646 - 0.71684</b>

## INSTITUTIONAL SNR (TYPICAL D1 PIVOT)

R3 Typical	0.72857	S1 Typical	<b>0.71227</b>
R2 Typical	0.72553	S2 Typical	<b>0.70922</b>
R1 Typical	0.72042	S3 Typical	<b>0.70411</b>
PIVOT (PP)			<b>0.71738</b>

● OPSI BUY: Jika tembus Buy Stop di 0.71767. SL: 0.71671 (Fibo) | TP: 0.71958 (Fibo 161.8).

● OPSI SELL: Jika tembus Sell Stop di 0.71716. SL: 0.71811 (Fibo) | TP: 0.71525 (Fibo 161.8).

## AI PREDICTION: **BULLISH (95%)** KUAT SMC STRATEGY



### SMC Insight & Market Narrative:

Market berada dalam fase **Markup** dengan struktur **BOS (Break of Structure)**. Analisa confluence H1/H4 menunjukkan dominasi institusional sebesar 74.0% BUY / 26.0% SELL. Target OB di **0.71230 - 0.71256** dan FVG di **0.71646 - 0.71684** telah terkonfirmasi.



# USDCAD.pkn

SELL 93%

## STRATEGY TARGET

ENTRY	1.37375	PIVOT	<b>1.37420</b>
TP 1 (Fibo 161.8)	<b>1.37235</b>	OB ZONE	<b>1.37618 - 1.37634</b>
SL (Institutional)	<b>1.37420</b>	FVG ZONE	<b>1.37412 - 1.37437</b>

## INSTITUTIONAL SNR (TYPICAL D1 PIVOT)

R3 Typical	1.38310	S1 Typical	<b>1.37170</b>
R2 Typical	1.37990	S2 Typical	<b>1.36850</b>
R1 Typical	1.37740	S3 Typical	<b>1.36600</b>
PIVOT (PP)			<b>1.37420</b>

● OPSI BUY: Jika tembus Buy Stop di 1.37391. SL: 1.37330 (Fibo) | TP: 1.37515 (Fibo 161.8).

● OPSI SELL: Jika tembus Sell Stop di 1.37359. SL: 1.37420 (Fibo) | TP: 1.37235 (Fibo 161.8).

## AI PREDICTION: **BEARISH (93%)** KUAT SMC STRATEGY

### SMC Insight & Market Narrative:

Market berada dalam fase **Accumulation** dengan struktur **BOS (Break of Structure)**. Analisa confluence H1/H4 menunjukkan dominasi institusional sebesar 23.5% BUY / 76.5% SELL. Target OB di **1.37618 - 1.37634** dan FVG di **1.37412 - 1.37437** telah terkonfirmasi.



# USDCHF.pkn

SELL 96%

## STRATEGY TARGET

ENTRY	0.78417	PIVOT	<b>0.78570</b>
TP 1 (Fibo 161.8)	<b>0.78217</b>	OB ZONE	<b>0.78750 - 0.78774</b>
SL (Institutional)	<b>0.78482</b>	FVG ZONE	<b>0.78470 - 0.78505</b>

## INSTITUTIONAL SNR (TYPICAL D1 PIVOT)

R3 Typical	0.79121	S1 Typical	<b>0.78407</b>
R2 Typical	0.78927	S2 Typical	<b>0.78213</b>
R1 Typical	0.78764	S3 Typical	<b>0.78050</b>
PIVOT (PP)			<b>0.78570</b>

● OPSI BUY: Jika tembus Buy Stop di 0.78441. SL: 0.78352 (Fibo) | TP: 0.78617 (Fibo 161.8).

● OPSI SELL: Jika tembus Sell Stop di 0.78393. SL: 0.78482 (Fibo) | TP: 0.78217 (Fibo 161.8).

## AI PREDICTION: **BEARISH (96%)** KUAT SMC STRATEGY

### SMC Insight & Market Narrative:

Market berada dalam fase **Markdown** dengan struktur **BOS (Break of Structure)**. Analisa confluence H1/H4 menunjukkan dominasi institusional sebesar 15.4% BUY / 84.6% SELL. Target OB di **0.78750 - 0.78774** dan FVG di **0.78470 - 0.78505** telah terkonfirmasi.



# NZDUSD.pkn

BUY 98%

## STRATEGY TARGET

ENTRY	0.58796	PIVOT	<b>0.58634</b>
TP 1 (Fibo 161.8)	<b>0.58946</b>	OB ZONE	<b>0.58258 - 0.58276</b>
SL (Institutional)	<b>0.58747</b>	FVG ZONE	<b>0.58730 - 0.58756</b>

## INSTITUTIONAL SNR (TYPICAL D1 PIVOT)

R3 Typical	0.59636	S1 Typical	<b>0.58145</b>
R2 Typical	0.59379	S2 Typical	<b>0.57888</b>
R1 Typical	0.58890	S3 Typical	<b>0.57399</b>
PIVOT (PP)			<b>0.58634</b>

● OPSI BUY: Jika tembus Buy Stop di 0.58814. SL: 0.58747 (Fibo) | TP: 0.58946 (Fibo 161.8).

● OPSI SELL: Jika tembus Sell Stop di 0.58778. SL: 0.58844 (Fibo) | TP: 0.58646 (Fibo 161.8).

## AI PREDICTION: **BULLISH (98%)** KUAT SMC STRATEGY

### SMC Insight & Market Narrative:

Market berada dalam fase **Markup** dengan struktur **BOS (Break of Structure)**. Analisa confluence H1/H4 menunjukkan dominasi institusional sebesar 95% BUY / 5% SELL. Target OB di **0.58258 - 0.58276** dan FVG di **0.58730 - 0.58756** telah terkonfirmasi.



# JPK.pk

SELL 98%

## STRATEGY TARGET

ENTRY	60820	PIVOT	<b>61805</b>
TP 1 (Fibo 161.8)	<b>59810</b>	OB ZONE	<b>63681 - 63799</b>
SL (Institutional)	<b>61146</b>	FVG ZONE	<b>61087 - 61265</b>

## INSTITUTIONAL SNR (TYPICAL D1 PIVOT)

R3 Typical	64972	S1 Typical	<b>60375</b>
R2 Typical	64104	S2 Typical	<b>59507</b>
R1 Typical	62673	S3 Typical	<b>58076</b>
PIVOT (PP)			<b>61805</b>

● OPSI BUY: Jika tembus Buy Stop di 60938. SL: 60493 (Fibo) | TP: 61829 (Fibo 161.8).

● OPSI SELL: Jika tembus Sell Stop di 60701. SL: 61146 (Fibo) | TP: 59810 (Fibo 161.8).

## AI PREDICTION: **BEARISH (98%)** KUAT SMC STRATEGY

### SMC Insight & Market Narrative:

Market berada dalam fase **Accumulation** dengan struktur **BOS (Break of Structure)**. Analisa confluence H1/H4 menunjukkan dominasi institusional sebesar 5% BUY / 95% SELL. Target OB di **63681 - 63799** dan FVG di **61087 - 61265** telah terkonfirmasi.



# HKK.pk

SELL 98%

## STRATEGY TARGET

ENTRY	25675	PIVOT	26067
TP 1 (Fibo 161.8)	25324	OB ZONE	26803 - 26845
SL (Institutional)	25789	FVG ZONE	25768 - 25830

## INSTITUTIONAL SNR (TYPICAL D1 PIVOT)

R3 Typical	26831	S1 Typical	25743
R2 Typical	26611	S2 Typical	25523
R1 Typical	26287	S3 Typical	25199
PIVOT (PP)			26067

● OPSI BUY: Jika tembus Buy Stop di 25717. SL: 25561 (Fibo) | TP: 26027 (Fibo 161.8).

● OPSI SELL: Jika tembus Sell Stop di 25634. SL: 25789 (Fibo) | TP: 25324 (Fibo 161.8).

## AI PREDICTION: **BEARISH (98%)** KUAT SMC STRATEGY

### SMC Insight & Market Narrative:

Market berada dalam fase **Accumulation** dengan struktur **BOS (Break of Structure)**. Analisa confluence H1/H4 menunjukkan dominasi institusional sebesar 5% BUY / 95% SELL. Target OB di **26803 - 26845** dan FVG di **25768 - 25830** telah terkonfirmasi.



# DJ.pk

BUY 88%

## STRATEGY TARGET

ENTRY	49813	PIVOT	<b>49303</b>
TP 1 (Fibo 161.8)	<b>50103</b>	OB ZONE	<b>49152 - 49186</b>
SL (Institutional)	<b>49719</b>	FVG ZONE	<b>49685 - 49736</b>

## INSTITUTIONAL SNR (TYPICAL D1 PIVOT)

R3 Typical	49838	S1 Typical	<b>49052</b>
R2 Typical	49696	S2 Typical	<b>48910</b>
R1 Typical	49445	S3 Typical	<b>48659</b>
PIVOT (PP)			<b>49303</b>

● OPSI BUY: Jika tembus Buy Stop di 49847. SL: 49719 (Fibo) | TP: 50103 (Fibo 161.8).

● OPSI SELL: Jika tembus Sell Stop di 49779. SL: 49907 (Fibo) | TP: 49523 (Fibo 161.8).

## AI PREDICTION: **BULLISH (93%)** KUAT SMC STRATEGY

### SMC Insight & Market Narrative:

Market berada dalam fase **Markup** dengan struktur **BOS (Break of Structure)**. Analisa confluence H1/H4 menunjukkan dominasi institusional sebesar 74.7% BUY / 25.3% SELL. Target OB di **49152 - 49186** dan FVG di **49685 - 49736** telah terkonfirmasi.



# NQ.pk

BUY 89%

## STRATEGY TARGET

ENTRY	29166.75	PIVOT	<b>29087.92</b>
TP 1 (Fibo 161.8)	<b>29578.15</b>	OB ZONE	<b>28814.75 - 28863.15</b>
SL (Institutional)	<b>29033.65</b>	FVG ZONE	<b>28985.25 - 29057.85</b>

## INSTITUTIONAL SNR (TYPICAL D1 PIVOT)

R3 Typical	29603.08	S1 Typical	<b>28896.58</b>
R2 Typical	29441.17	S2 Typical	<b>28734.67</b>
R1 Typical	29249.83	S3 Typical	<b>28543.33</b>
PIVOT (PP)			<b>29087.92</b>

● OPSI BUY: Jika tembus Buy Stop di 29215.15. SL: 29033.65 (Fibo) | TP: 29578.15 (Fibo 161.8).

● OPSI SELL: Jika tembus Sell Stop di 29118.35. SL: 29299.85 (Fibo) | TP: 28755.35 (Fibo 161.8).

## AI PREDICTION: **BULLISH (94%)** KUAT SMC STRATEGY

### SMC Insight & Market Narrative:

Market berada dalam fase **Accumulation** dengan struktur **CHoCH (Change of Character)**. Analisa confluence H1/H4 menunjukkan dominasi institusional sebesar 68.4% BUY / 31.6% SELL. Target OB di **28814.75 - 28863.15** dan FVG di **28985.25 - 29057.85** telah terkonfirmasi.



# SP.pk

BUY 82%

## STRATEGY TARGET

ENTRY	7437.25	PIVOT	<b>7398.75</b>
TP 1 (Fibo 161.8)	<b>7492.16</b>	OB ZONE	<b>7373.50 - 7379.96</b>
SL (Institutional)	<b>7419.48</b>	FVG ZONE	<b>7413.02 - 7422.72</b>

## INSTITUTIONAL SNR (TYPICAL D1 PIVOT)

R3 Typical	7482.50	S1 Typical	<b>7362.50</b>
R2 Typical	7458.75	S2 Typical	<b>7338.75</b>
R1 Typical	7422.50	S3 Typical	<b>7302.50</b>
PIVOT (PP)			<b>7398.75</b>

● OPSI BUY: Jika tembus Buy Stop di 7443.71. SL: 7419.48 (Fibo) | TP: 7492.16 (Fibo 161.8).

● OPSI SELL: Jika tembus Sell Stop di 7430.79. SL: 7455.02 (Fibo) | TP: 7382.34 (Fibo 161.8).

## AI PREDICTION: **BULLISH (87%)** KUAT SMC STRATEGY

### SMC Insight & Market Narrative:

Market berada dalam fase **Markup** dengan struktur **CHoCH (Change of Character)**. Analisa confluence H1/H4 menunjukkan dominasi institusional sebesar 63.8% BUY / 36.2% SELL. Target OB di **7373.50 - 7379.96** dan FVG di **7413.02 - 7422.72** telah terkonfirmasi.



# EURJPY.pkn

BUY 98%

## STRATEGY TARGET

ENTRY	185.150	PIVOT	<b>184.516</b>
TP 1 (Fibo 161.8)	<b>185.394</b>	OB ZONE	<b>184.408 - 184.437</b>
SL (Institutional)	<b>185.071</b>	FVG ZONE	<b>185.042 - 185.085</b>

## INSTITUTIONAL SNR (TYPICAL D1 PIVOT)

R3 Typical	185.511	S1 Typical	<b>184.213</b>
R2 Typical	185.165	S2 Typical	<b>183.867</b>
R1 Typical	184.862	S3 Typical	<b>183.564</b>
PIVOT (PP)			<b>184.516</b>

● OPSI BUY: Jika tembus Buy Stop di 185.179. SL: 185.071 (Fibo) | TP: 185.394 (Fibo 161.8).

● OPSI SELL: Jika tembus Sell Stop di 185.121. SL: 185.229 (Fibo) | TP: 184.906 (Fibo 161.8).

## AI PREDICTION: **BULLISH (98%)** KUAT SMC STRATEGY

### SMC Insight & Market Narrative:

Market berada dalam fase **Markup** dengan struktur **BOS (Break of Structure)**. Analisa confluence H1/H4 menunjukkan dominasi institusional sebesar 95% BUY / 5% SELL. Target OB di **184.408 - 184.437** dan FVG di **185.042 - 185.085** telah terkonfirmasi.



# GBPJPY.pkn

BUY 98%

## STRATEGY TARGET

ENTRY	213.344	PIVOT	<b>211.679</b>
TP 1 (Fibo 161.8)	<b>214.116</b>	OB ZONE	<b>211.366 - 211.457</b>
SL (Institutional)	<b>213.094</b>	FVG ZONE	<b>213.003 - 213.140</b>

## INSTITUTIONAL SNR (TYPICAL D1 PIVOT)

R3 Typical	213.016	S1 Typical	<b>211.134</b>
R2 Typical	212.620	S2 Typical	<b>210.738</b>
R1 Typical	212.075	S3 Typical	<b>210.193</b>
PIVOT (PP)			<b>211.679</b>

● OPSI BUY: Jika tembus Buy Stop di 213.435. SL: 213.094 (Fibo) | TP: 214.116 (Fibo 161.8).

● OPSI SELL: Jika tembus Sell Stop di 213.253. SL: 213.594 (Fibo) | TP: 212.572 (Fibo 161.8).

## AI PREDICTION: **BULLISH (98%)** KUAT SMC STRATEGY

### SMC Insight & Market Narrative:

Market berada dalam fase **Accumulation** dengan struktur **BOS (Break of Structure)**. Analisa confluence H1/H4 menunjukkan dominasi institusional sebesar 95% BUY / 5% SELL. Target OB di **211.366 - 211.457** dan FVG di **213.003 - 213.140** telah terkonfirmasi.



# CHFJPY.pkn

BUY 98%

## STRATEGY TARGET

ENTRY	202.472	PIVOT	<b>201.762</b>
TP 1 (Fibo 161.8)	<b>202.859</b>	OB ZONE	<b>201.609 - 201.655</b>
SL (Institutional)	<b>202.347</b>	FVG ZONE	<b>202.301 - 202.370</b>

## INSTITUTIONAL SNR (TYPICAL D1 PIVOT)

R3 Typical	202.653	S1 Typical	<b>201.475</b>
R2 Typical	202.351	S2 Typical	<b>201.173</b>
R1 Typical	202.064	S3 Typical	<b>200.886</b>
PIVOT (PP)			<b>201.762</b>

● OPSI BUY: Jika tembus Buy Stop di 202.518. SL: 202.347 (Fibo) | TP: 202.859 (Fibo 161.8).

● OPSI SELL: Jika tembus Sell Stop di 202.426. SL: 202.597 (Fibo) | TP: 202.085 (Fibo 161.8).

## AI PREDICTION: **BULLISH (98%)** KUAT SMC STRATEGY

### SMC Insight & Market Narrative:

Market berada dalam fase **Accumulation** dengan struktur **BOS (Break of Structure)**. Analisa confluence H1/H4 menunjukkan dominasi institusional sebesar 95% BUY / 5% SELL. Target OB di **201.609 - 201.655** dan FVG di **202.301 - 202.370** telah terkonfirmasi.



# AUDJPY.pkn

BUY 94%

## STRATEGY TARGET

ENTRY	113.891	PIVOT	<b>113.695</b>
TP 1 (Fibo 161.8)	<b>114.157</b>	OB ZONE	<b>113.118 - 113.149</b>
SL (Institutional)	<b>113.805</b>	FVG ZONE	<b>113.774 - 113.821</b>

## INSTITUTIONAL SNR (TYPICAL D1 PIVOT)

R3 Typical	115.445	S1 Typical	<b>112.987</b>
R2 Typical	114.924	S2 Typical	<b>112.466</b>
R1 Typical	114.216	S3 Typical	<b>111.758</b>
PIVOT (PP)			<b>113.695</b>

● OPSI BUY: Jika tembus Buy Stop di 113.922. SL: 113.805 (Fibo) | TP: 114.157 (Fibo 161.8).

● OPSI SELL: Jika tembus Sell Stop di 113.860. SL: 113.977 (Fibo) | TP: 113.625 (Fibo 161.8).

## AI PREDICTION: **BULLISH (98%)** KUAT SMC STRATEGY

### SMC Insight & Market Narrative:

Market berada dalam fase **Markup** dengan struktur **BOS (Break of Structure)**. Analisa confluence H1/H4 menunjukkan dominasi institusional sebesar 88.1% BUY / 11.9% SELL. Target OB di **113.118 - 113.149** dan FVG di **113.774 - 113.821** telah terkonfirmasi.



# EURGBP.pkn

SELL 98%

## STRATEGY TARGET

ENTRY	0.86770	PIVOT	<b>0.87181</b>
TP 1 (Fibo 161.8)	<b>0.86514</b>	OB ZONE	<b>0.87266 - 0.87296</b>
SL (Institutional)	<b>0.86853</b>	FVG ZONE	<b>0.86838 - 0.86883</b>

## INSTITUTIONAL SNR (TYPICAL D1 PIVOT)

R3 Typical	0.87639	S1 Typical	<b>0.87073</b>
R2 Typical	0.87464	S2 Typical	<b>0.86898</b>
R1 Typical	0.87356	S3 Typical	<b>0.86790</b>
PIVOT (PP)			<b>0.87181</b>

● OPSI BUY: Jika tembus Buy Stop di 0.86800. SL: 0.86687 (Fibo) | TP: 0.87026 (Fibo 161.8).

● OPSI SELL: Jika tembus Sell Stop di 0.86740. SL: 0.86853 (Fibo) | TP: 0.86514 (Fibo 161.8).

## AI PREDICTION: **BEARISH (98%)** KUAT SMC STRATEGY

### SMC Insight & Market Narrative:

Market berada dalam fase **Accumulation** dengan struktur **BOS (Break of Structure)**. Analisa confluence H1/H4 menunjukkan dominasi institusional sebesar 5% BUY / 95% SELL. Target OB di **0.87266 - 0.87296** dan FVG di **0.86838 - 0.86883** telah terkonfirmasi.



# EURCHF.pkn

SELL 82%

## STRATEGY TARGET

ENTRY	0.91421	PIVOT	<b>0.91414</b>
TP 1 (Fibo 161.8)	<b>0.91283</b>	OB ZONE	<b>0.91518 - 0.91534</b>
SL (Institutional)	<b>0.91466</b>	FVG ZONE	<b>0.91458 - 0.91482</b>

## INSTITUTIONAL SNR (TYPICAL D1 PIVOT)

R3 Typical	0.91740	S1 Typical	<b>0.91308</b>
R2 Typical	0.91630	S2 Typical	<b>0.91198</b>
R1 Typical	0.91524	S3 Typical	<b>0.91092</b>
PIVOT (PP)			<b>0.91414</b>

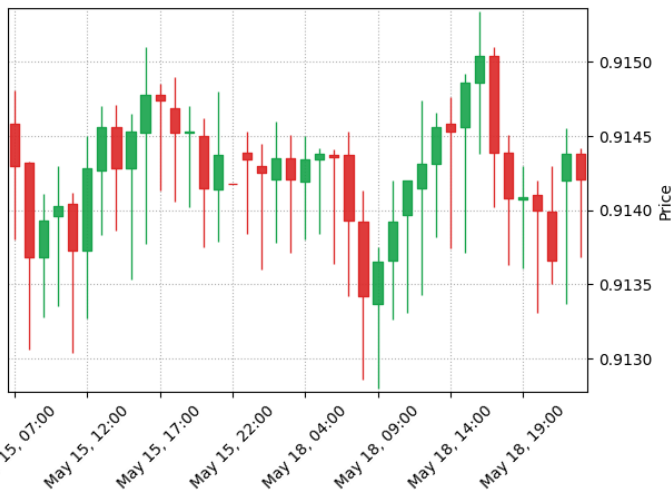
● OPSI BUY: Jika tembus Buy Stop di 0.91437. SL: 0.91376 (Fibo) | TP: 0.91559 (Fibo 161.8).

● OPSI SELL: Jika tembus Sell Stop di 0.91405. SL: 0.91466 (Fibo) | TP: 0.91283 (Fibo 161.8).

## AI PREDICTION: **BEARISH (82%)** KUAT SMC STRATEGY

### SMC Insight & Market Narrative:

Market berada dalam fase **Accumulation** dengan struktur **CHoCH (Change of Character)**. Analisa confluence H1/H4 menunjukkan dominasi institusional sebesar 37.0% BUY / 63.0% SELL. Target OB di **0.91518 - 0.91534** dan FVG di **0.91458 - 0.91482** telah terkonfirmasi.



# GBPAUD.pkn

BUY 98%

## STRATEGY TARGET

ENTRY	1.87318	PIVOT	<b>1.86196</b>
TP 1 (Fibo 161.8)	<b>1.88131</b>	OB ZONE	<b>1.86152 - 1.86248</b>
SL (Institutional)	<b>1.87055</b>	FVG ZONE	<b>1.86959 - 1.87103</b>

## INSTITUTIONAL SNR (TYPICAL D1 PIVOT)

R3 Typical	1.88515	S1 Typical	<b>1.85523</b>
R2 Typical	1.87692	S2 Typical	<b>1.84700</b>
R1 Typical	1.87019	S3 Typical	<b>1.84027</b>
PIVOT (PP)			<b>1.86196</b>

● OPSI BUY: Jika tembus Buy Stop di 1.87414. SL: 1.87055 (Fibo) | TP: 1.88131 (Fibo 161.8).

● OPSI SELL: Jika tembus Sell Stop di 1.87222. SL: 1.87581 (Fibo) | TP: 1.86505 (Fibo 161.8).

## AI PREDICTION: **BULLISH (98%)** KUAT SMC STRATEGY

### SMC Insight & Market Narrative:

Market berada dalam fase **Accumulation** dengan struktur **BOS (Break of Structure)**. Analisa confluence H1/H4 menunjukkan dominasi institusional sebesar 91.4% BUY / 8.6% SELL. Target OB di **1.86152 - 1.86248** dan FVG di **1.86959 - 1.87103** telah terkonfirmasi.



# AUDNZD.pkn

SELL 96%

## STRATEGY TARGET

ENTRY	1.22003	PIVOT	<b>1.22322</b>
TP 1 (Fibo 161.8)	<b>1.21694</b>	OB ZONE	<b>1.22432 - 1.22468</b>
SL (Institutional)	<b>1.22103</b>	FVG ZONE	<b>1.22085 - 1.22139</b>

## INSTITUTIONAL SNR (TYPICAL D1 PIVOT)

R3 Typical	1.22976	S1 Typical	<b>1.22170</b>
R2 Typical	1.22725	S2 Typical	<b>1.21919</b>
R1 Typical	1.22573	S3 Typical	<b>1.21767</b>
PIVOT (PP)			<b>1.22322</b>

● OPSI BUY: Jika tembus Buy Stop di 1.22039. SL: 1.21903 (Fibo) | TP: 1.22312 (Fibo 161.8).

● OPSI SELL: Jika tembus Sell Stop di 1.21967. SL: 1.22103 (Fibo) | TP: 1.21694 (Fibo 161.8).

## AI PREDICTION: **BEARISH (96%)** KUAT SMC STRATEGY

### SMC Insight & Market Narrative:

Market berada dalam fase **Accumulation** dengan struktur **BOS (Break of Structure)**. Analisa confluence H1/H4 menunjukkan dominasi institusional sebesar 17.8% BUY / 82.2% SELL. Target OB di **1.22432 - 1.22468** dan FVG di **1.22085 - 1.22139** telah terkonfirmasi.



# EURAUD.pkn

SELL 88%

## STRATEGY TARGET

ENTRY	1.62555	PIVOT	<b>1.62262</b>
TP 1 (Fibo 161.8)	<b>1.62150</b>	OB ZONE	<b>1.63029 - 1.63077</b>
SL (Institutional)	<b>1.62686</b>	FVG ZONE	<b>1.62662 - 1.62734</b>

## INSTITUTIONAL SNR (TYPICAL D1 PIVOT)

R3 Typical	1.64421	S1 Typical	<b>1.61727</b>
R2 Typical	1.63609	S2 Typical	<b>1.60915</b>
R1 Typical	1.63074	S3 Typical	<b>1.60380</b>
PIVOT (PP)			<b>1.62262</b>

● OPSI BUY: Jika tembus Buy Stop di 1.62603. SL: 1.62424 (Fibo) | TP: 1.62960 (Fibo 161.8).

● OPSI SELL: Jika tembus Sell Stop di 1.62507. SL: 1.62686 (Fibo) | TP: 1.62150 (Fibo 161.8).

## AI PREDICTION: **BEARISH (88%)** KUAT SMC STRATEGY

### SMC Insight & Market Narrative:

Market berada dalam fase **Accumulation** dengan struktur **CHoCH (Change of Character)**. Analisa confluence H1/H4 menunjukkan dominasi institusional sebesar 33.1% BUY / 66.9% SELL. Target OB di **1.63029 - 1.63077** dan FVG di **1.62662 - 1.62734** telah terkonfirmasi.



# EURCAD.pkn

BUY 98%

## STRATEGY TARGET

ENTRY	1.60151	PIVOT	<b>1.59887</b>
TP 1 (Fibo 161.8)	<b>1.60384</b>	OB ZONE	<b>1.59669 - 1.59696</b>
SL (Institutional)	<b>1.60076</b>	FVG ZONE	<b>1.60048 - 1.60089</b>

## INSTITUTIONAL SNR (TYPICAL D1 PIVOT)

R3 Typical	1.60628	S1 Typical	<b>1.59584</b>
R2 Typical	1.60409	S2 Typical	<b>1.59365</b>
R1 Typical	1.60106	S3 Typical	<b>1.59062</b>
PIVOT (PP)			<b>1.59887</b>

● OPSI BUY: Jika tembus Buy Stop di 1.60178. SL: 1.60076 (Fibo) | TP: 1.60384 (Fibo 161.8).

● OPSI SELL: Jika tembus Sell Stop di 1.60124. SL: 1.60226 (Fibo) | TP: 1.59918 (Fibo 161.8).

## AI PREDICTION: **BULLISH (98%)** KUAT SMC STRATEGY



### SMC Insight & Market Narrative:

Market berada dalam fase **Markup** dengan struktur **BOS (Break of Structure)**. Analisa confluence H1/H4 menunjukkan dominasi institusional sebesar 89.1% BUY / 10.9% SELL. Target OB di **1.59669 - 1.59696** dan FVG di **1.60048 - 1.60089** telah terkonfirmasi.



# GBPCHF.pkn

BUY 98%

## STRATEGY TARGET

ENTRY	1.05340	PIVOT	<b>1.04853</b>
TP 1 (Fibo 161.8)	<b>1.05715</b>	OB ZONE	<b>1.04692 - 1.04736</b>
SL (Institutional)	<b>1.05219</b>	FVG ZONE	<b>1.05175 - 1.05241</b>

## INSTITUTIONAL SNR (TYPICAL D1 PIVOT)

R3 Typical	1.05368	S1 Typical	<b>1.04636</b>
R2 Typical	1.05219	S2 Typical	<b>1.04487</b>
R1 Typical	1.05002	S3 Typical	<b>1.04270</b>
PIVOT (PP)			<b>1.04853</b>

● OPSI BUY: Jika tembus Buy Stop di 1.05384. SL: 1.05219 (Fibo) | TP: 1.05715 (Fibo 161.8).

● OPSI SELL: Jika tembus Sell Stop di 1.05296. SL: 1.05461 (Fibo) | TP: 1.04965 (Fibo 161.8).

## AI PREDICTION: **BULLISH (98%)** KUAT SMC STRATEGY

### SMC Insight & Market Narrative:

Market berada dalam fase **Accumulation** dengan struktur **BOS (Break of Structure)**. Analisa confluence H1/H4 menunjukkan dominasi institusional sebesar 92.1% BUY / 7.9% SELL. Target OB di **1.04692 - 1.04736** dan FVG di **1.05175 - 1.05241** telah terkonfirmasi.

